



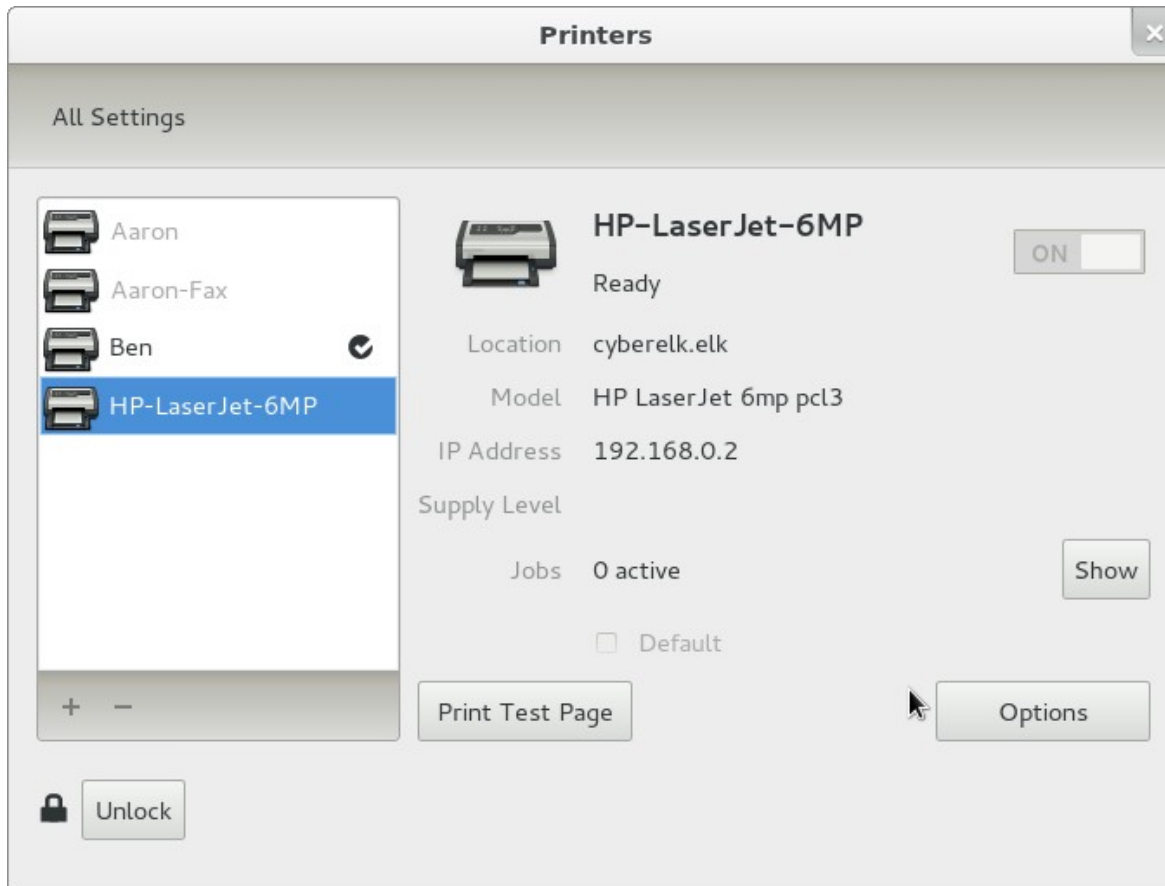
# Status of printer configuration (system-config-printer)

Presenter

Tim Waugh  
Senior Software  
Engineer, Red Hat

# Big changes coming

## GNOME 3 System Settings



# What about system-config-printer?

- New System Settings Printers module meant to be simple, not to replace system-config-printer

(but we'll see...)

- No “Server Settings”, for example
- Lessons learned in system-config-printer can be applied to new configuration tools

e.g. choosing the best driver

<http://cyberelk.net/tim/2011/02/23/adding-a-printer-to-cups/>

- Other desktops



# New GNOME 3 printing integration

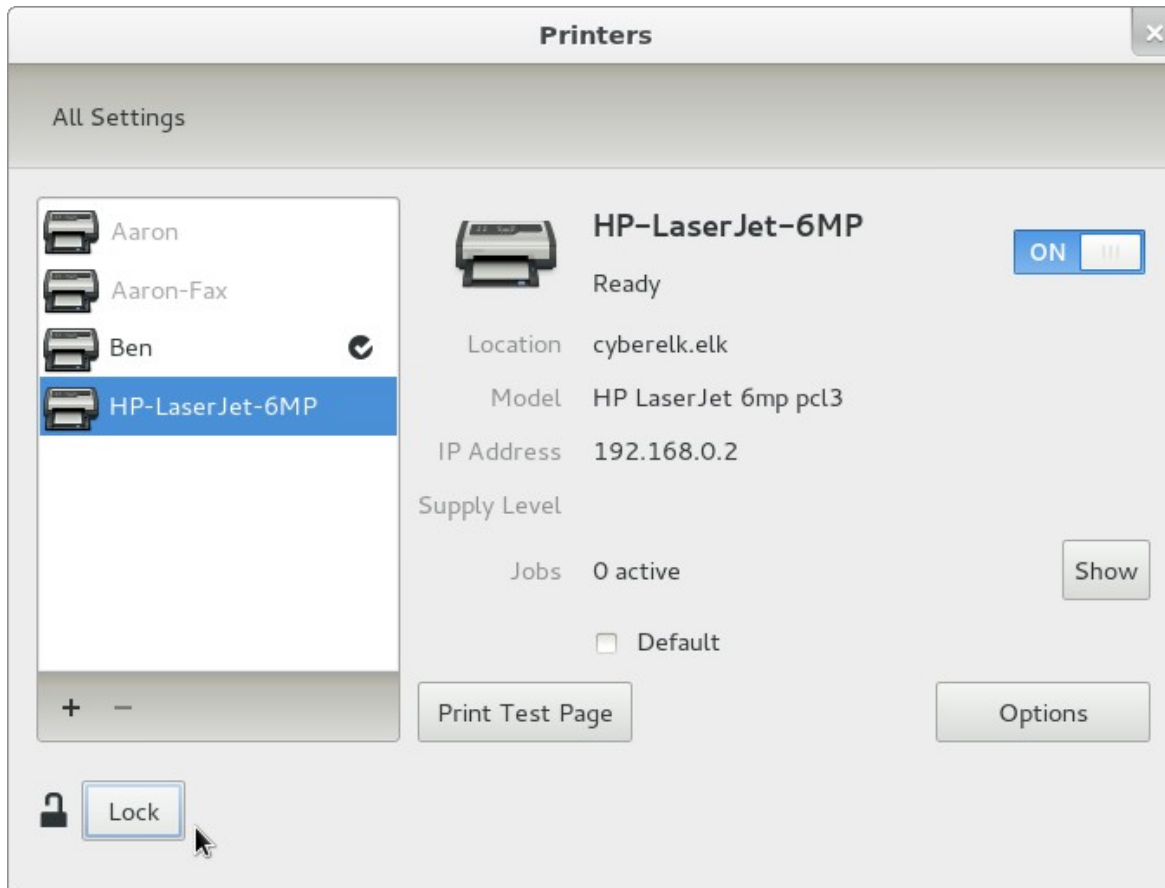
*No need for system-config-printer-applet any more*

- Notifications for printer added/removed
- Notifications for job status
- Automatic install of driver packages when printer connected, using PackageKit
- System Settings: simple printer and job operations



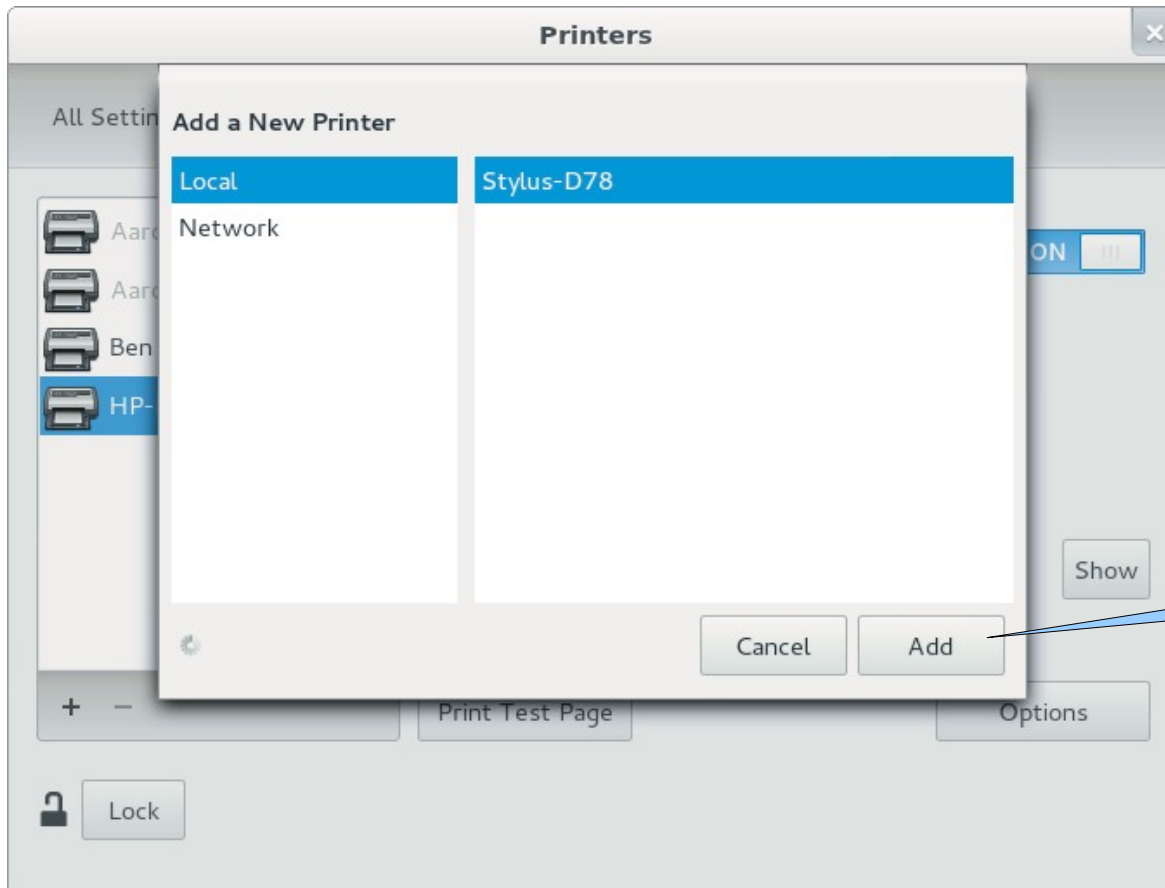
# New GNOME 3 printing integration

## System Settings



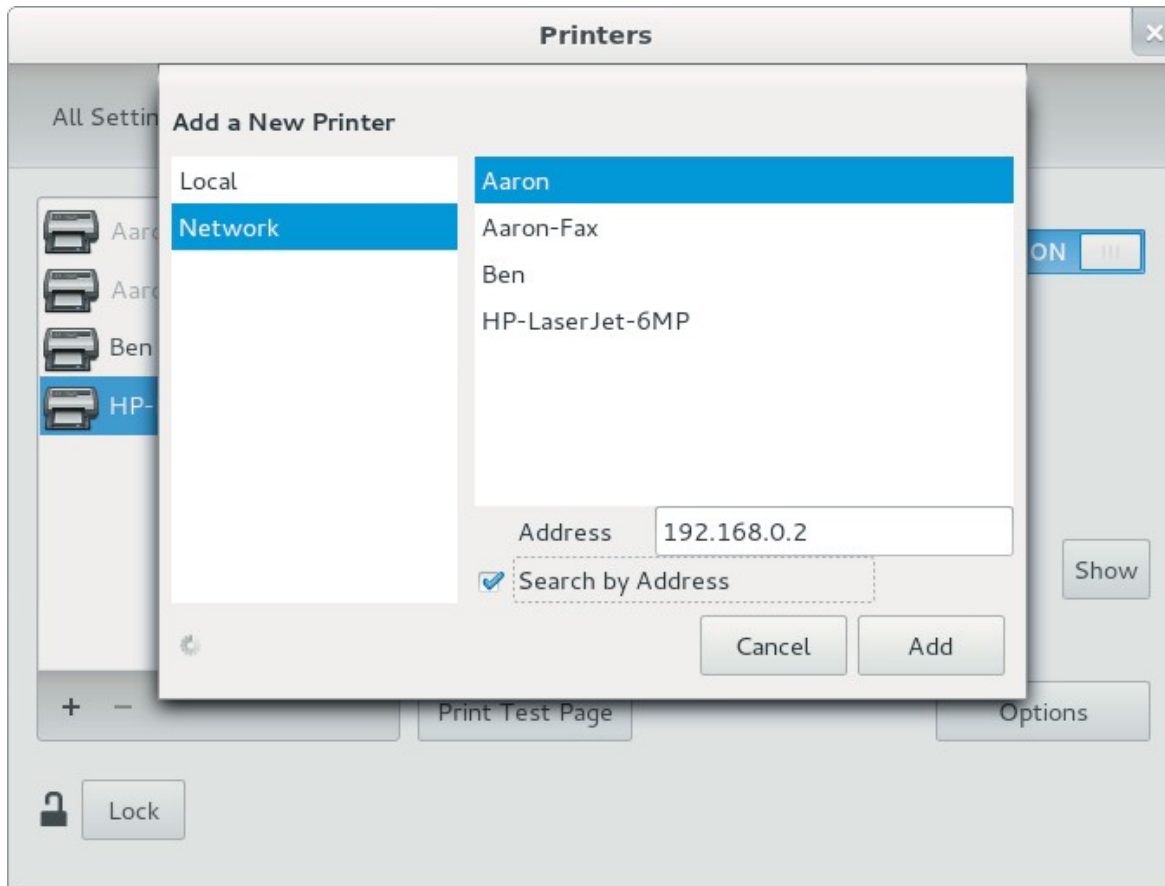
# New GNOME 3 printing integration

System Settings | adding a local printer



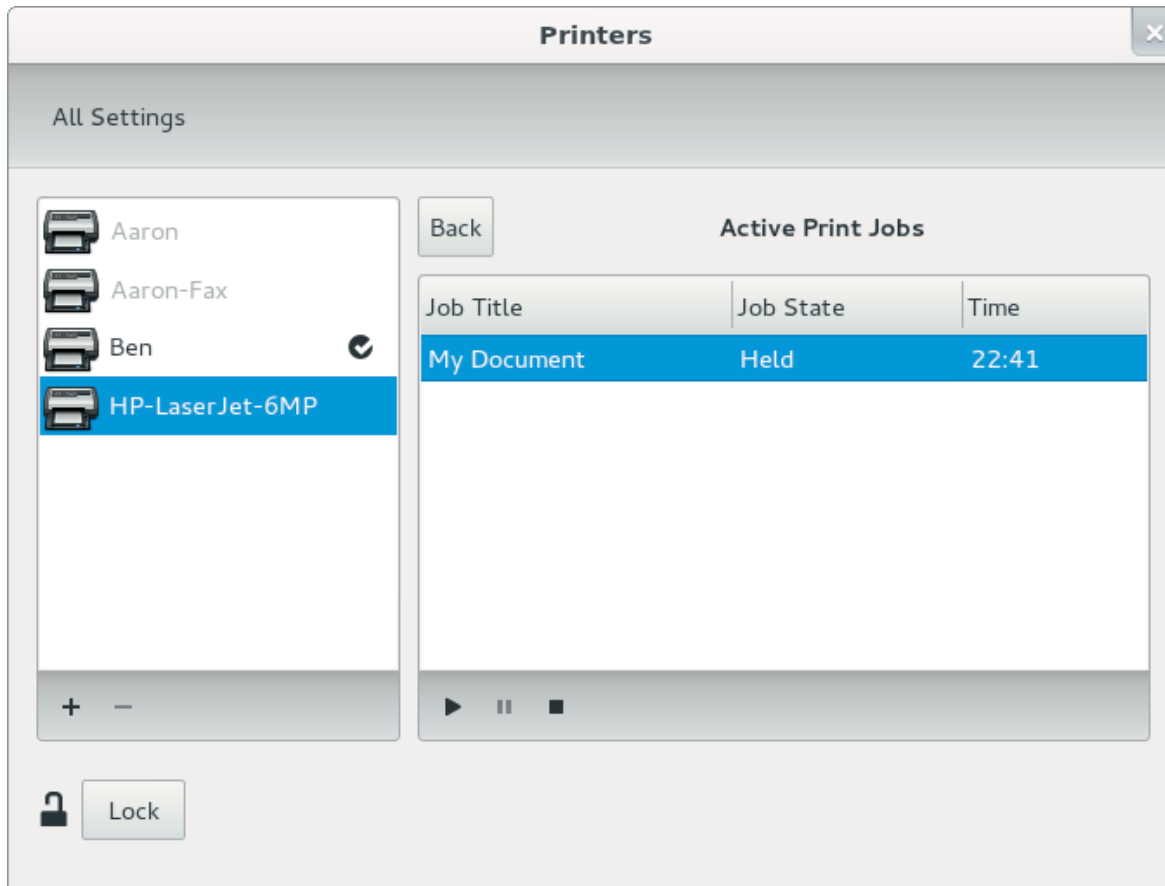
# New GNOME 3 printing integration

System Settings | adding a network printer (CUPS only for now)



# New GNOME 3 printing integration

System Settings | showing print jobs



# system-config-printer 1.3

- Better driver selection
  - XML rules for constructing preference list
  - Better model name comparison logic (Till Kamppeter)
  - CMD-based PPD elimination (George Liu)



# system-config-printer 1.3

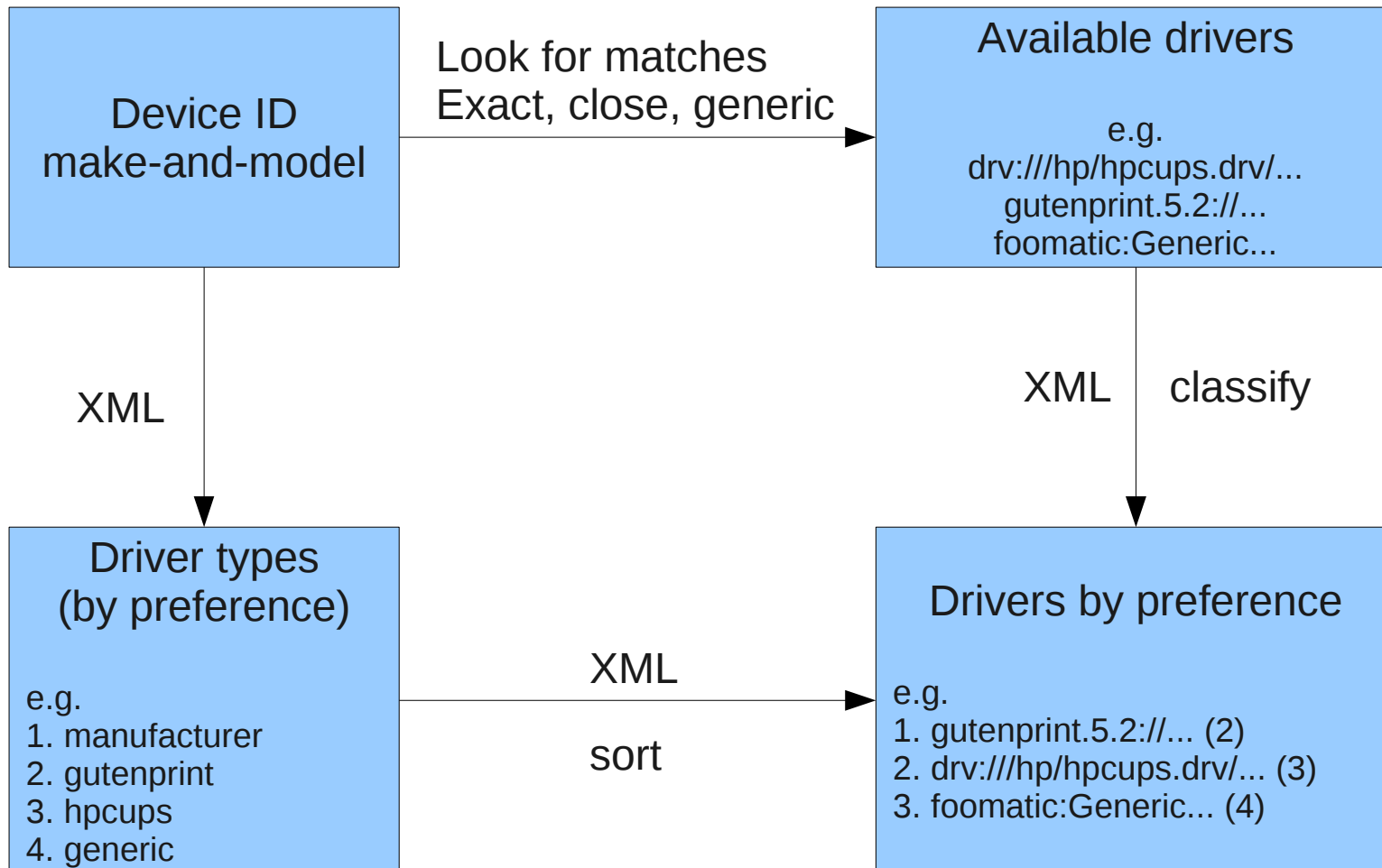
## *XML rules for constructing preference list*

- Foomatic's XML database can only speak about Foomatic drivers
  - Aim is to have a database that can speak about any arbitrary driver, even those not yet shipped/written
1. For the given make and model, build a preference list of *types* of driver
  2. Classify available drivers
  3. Sort them into preferred order



# system-config-printer 1.3

## *XML rules for constructing preference list*



# system-config-printer 1.3

*Better model name comparison logic*

- Normalized “spelled-out” form when comparing names

*Examples:*

- Epson PM-A820 → epson pm a 820
- Epson PM A820 → epson pm a 820
  
- HP PhotoSmart C 8100 → hp photosmart c 8100
- hp Photosmart C8100 → hp photosmart c 8100



# system-config-printer 1.3

## *CMD-based PPD elimination*

THE PROBLEM: Optional PostScript module

- When to use PostScript PPD?
- More generally:
  - How do we know if a PPD requires an optional PDL module to be installed?



# system-config-printer 1.3

## *CMD-based PPD elimination*

THE SOLUTION: Use CMD field in 1284DeviceID

- Device's IEEE 1284 Device ID tells us which command sets are supported
- So match this against the PPD



# system-config-printer 1.3

*CMD-based PPD elimination*

*Example:*

```
*1284DeviceID: "MFG:RICOH;MDL:Aficio CL7200;CMD:POSTSCRIPT;"
```

This PPD requires POSTSCRIPT.

The device's IEEE 1284 Device ID must contain POSTSCRIPT in its CMD field.



# Roadmap

- Expect more developments in GNOME 3
- Manufacturers: lists of correct Device IDs would help!
  - Fuzzy matching is unreliable
  - Drivers need to declare correct Device IDs



# Thanks

- Questions?

